



ARC-TLPB13

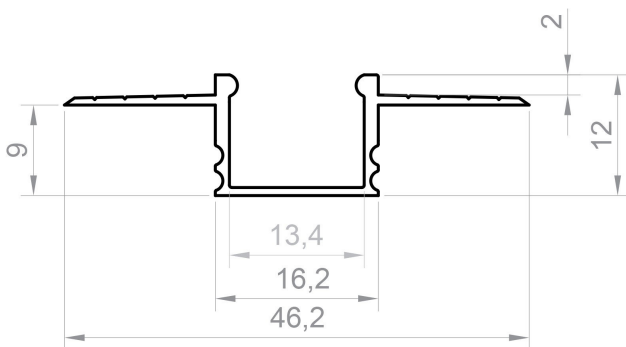
Profile Type	LED TAPE WIDTH
--------------	----------------

Plaster-In	up to 12 mm
------------	-------------

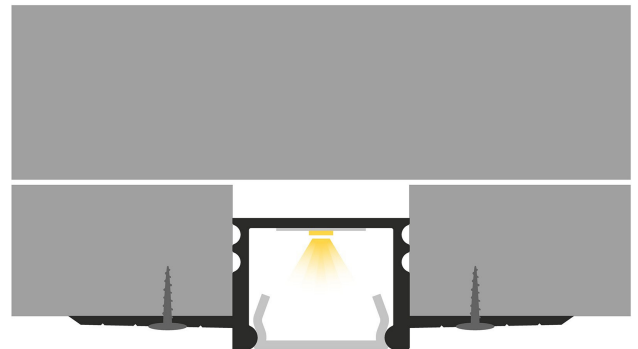
COLOUR VERSIONS	LENGTH
-----------------	--------

painted in white painted in black	3000 mm
--------------------------------------	---------

TECHNICAL DRAWING WITH DIMENSIONS



TECHNICAL INSTRUCTIONS



PRODUCT OVERVIEW

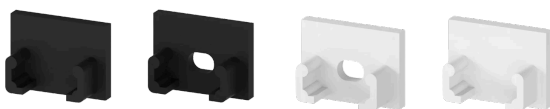
The ARC-TLPB13 profile is designed to fit into milled or cut holes and can be used on any surface such as drywall, walls, and ceilings. It features lowered wings that can be covered with plaster, making them flush with the wall surface for an aesthetic appearance.

This profile is particularly useful in achieving a uniform line of light over the entire surface without any dots, as it has an increased height compared to the ARC-PB or PBW. It is commonly used in interior finishing.

TECHNICAL SPECIFICATIONS

Length	3000mm
Internal Width	13.4mm
Overall Width	46.2mm
Depth	12mm
Material	Anodised Aluminium
Led Lights	Fits upto 12mm Tape

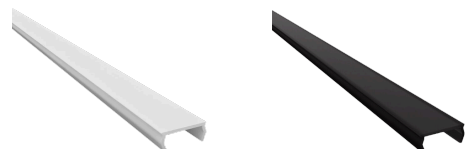
ACCESSORIES



ARC-TLPB13-EC-BLK

ARC-TLPB13-EC-WH

DIFFUSERS



ARC-TLPB13-OPAL-3M

ARC-TLPB13-BLACK-3M