

## ARC-PB-F

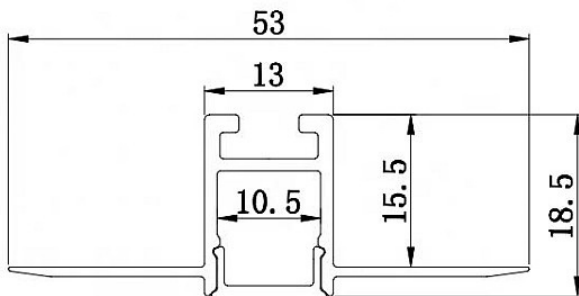
Profile Type	LED TAPE WIDTH
--------------	----------------

Plaster-In	up to 10mm
------------	------------

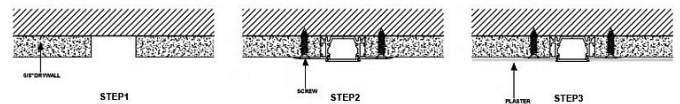
COLOUR VERSIONS	LENGTH
-----------------	--------

Silver	2000 mm
--------	---------

### TECHNICAL DRAWING WITH DIMENSIONS



### TECHNICAL INSTRUCTIONS



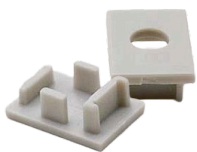
### PRODUCT OVERVIEW

The ARC-PB-F 2 Metre 10.5 mm Plaster-In LED Profile with Flange from ArcLED is a recessed aluminium LED channel designed to be integrated flush into plasterboard or drywall for sleek, hidden lighting. It features a 10.5 mm internal channel suitable for narrow LED strip lights and comes in a silver finish, making it a versatile choice for modern interiors. An opal diffuser is included, which helps to soften and spread the light evenly while concealing the LED chips for a smooth, uniform glow. The flange design helps secure the profile during installation and ensures a clean edge where the plaster meets the channel. Once plastered over, only the illuminated light line remains visible, giving a neat, architectural lighting effect ideal for ambient and accent illumination.

### TECHNICAL SPECIFICATIONS

Length	2000mm
Internal Width	10.5mm
Overall Width	53mm
Depth	18.5mm
Material	Extruded Aluminum   6063-T5
Led Lights	Fits upto 10mm Tape

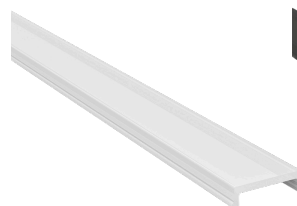
### ACCESSORIES



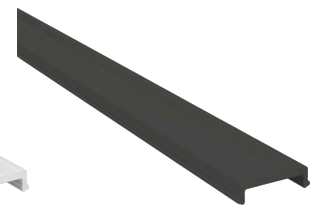
ARC-PB-F-EC



### DIFFUSERS



OPAL DIFFUSER INCLUDED



ARC-PBW-B-COVER