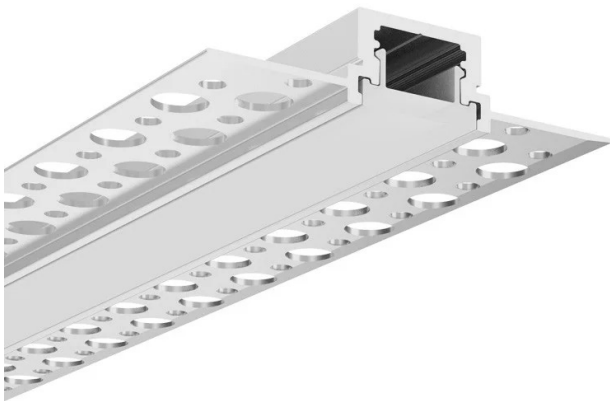
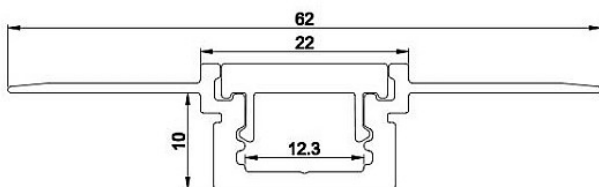


## ARC-PB12

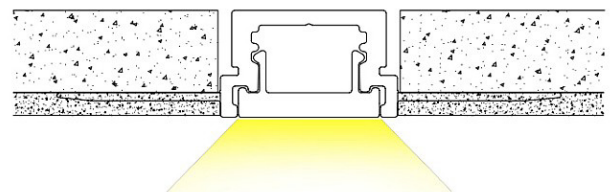


Profile Type	LED TAPE WIDTH
Plaster-In	up to 12mm
COLOUR VERSIONS	LENGTH
Silver	2000 mm

### TECHNICAL DRAWING WITH DIMENSIONS



### TECHNICAL INSTRUCTIONS



### PRODUCT OVERVIEW

This plaster-in flush-mount LED profile from ArcLED is designed to be recessed into plasterboard or drywall to create a clean, seamless integrated lighting line once finished. It features a 12.3 mm internal channel suitable for LED strip lights and comes with an extra thick opal diffuser included, which helps soften light output and reduce visible LED spotting for a smooth, uniform glow.

The aluminium profile is 2 metres long and finished in silver, with perforated edges that allow plaster to bond securely, resulting in a professional trimless finish. Ideal for architectural lighting, ambient accent lighting, or modern interior illumination where a sleek, flush-mounted LED solution is desired.

### TECHNICAL SPECIFICATIONS

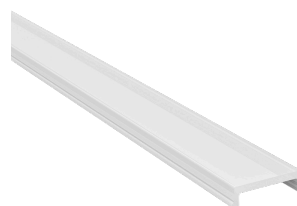
Length	2000mm
Internal Width	62mm
Overall Height	10mm
Depth	22m
Material	Extruded Aluminum   6063-T5
Led Lights	Fits upto 12mm Tape

### ACCESSORIES



ARC-PB12EC

### DIFFUSERS



OPAL DIFFUSER INCLUDED