

ARC-BENDPB-13MM

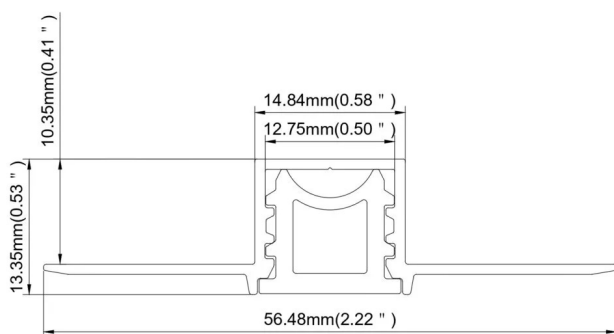
Profile Type	LED TAPE WIDTH
--------------	----------------

Plaster-In	up to 11.2 mm
------------	---------------

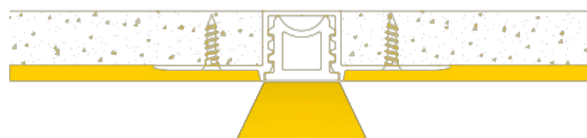
COLOUR VERSIONS	LENGTH
-----------------	--------

Silver	2000 mm
--------	---------

TECHNICAL DRAWING WITH DIMENSIONS



TECHNICAL INSTRUCTIONS



PRODUCT OVERVIEW

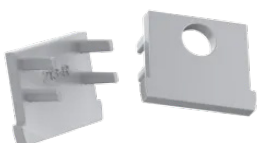
This bendable plaster-in LED profile features an 11.2 mm internal channel and includes a silicone diffuser to provide smooth, even light with reduced LED spotting. Designed to be recessed and plastered flush into walls or ceilings, it can bend both top and side to suit curved or straight lighting runs.

The profile allows top bending with a minimum diameter of 300 mm and side bending with a minimum diameter of 700 mm, making it ideal for clean, trimless architectural lighting in modern interiors.

TECHNICAL SPECIFICATIONS

Length	2000mm
Internal Width	12.75mm
Overall Width	56.48mm
Depth	13.35mm
Material	Anodised Aluminium
Led Lights	Fits upto 11.2mm Tape

ACCESSORIES



ARC-BENDPB-EC

DIFFUSERS



SILICONE DIFFUSER INCLUDED